

CAMERA LINK PCMCIA VIDEO CAPTURE CARD



FrameLink

Features

- PCMCIA Cardbus interface
- Small form factor PCMCIA Type II
- Intelligent scatter/gather DMA for fast, efficient use of PCI bus bandwidth
- On-board memory for fast image acquisition
- Base Camera Link compliant

With Imperx **PCMCIA frame grabbers**, applications and uses of portable and mobile vision systems become a reality. The **FrameLink** is the world's first digital Camera Link frame grabber for laptops, and provides the functionality, performance and versatility required by today's most demanding vision systems. The card features plug-n-play operation with hot insertion/removal and includes intelligent scatter/gather DMA engine with a generous supply of on-board memory. A full software suite including drivers and application is provided. SDK available.

Applications

- Industrial
 - Silicon wafer and PCB inspection
 - Machine vision
 - Document scanning
- Medical
 - Ultrasound
 - X-Ray, CT and MRI
- Security
 - Police in-car surveillance
 - Biometric identification
- Military
 - Aerial mapping/survey
 - Battlefield imaging
 - UAV, Robotic vision

MOBILITY... CONVENIENCE... PERFORMANCE...
PCMCIA FRAME GRABBERS

Specifications for FrameLink

Features

PCMCIA Cardbus 8.0 compliant
32-bit bus operating at 33 MHz
Intelligent scatter/gather DMA
256 Mbits onboard memory (two banks)
Plug-and-play with hot insertion and removal
Base Camera Link compliant
Selectable window sizes
Adjustable RGB brightness level (256 steps each color)
Bayer pattern interpolation
Captures single, multiple frames or AVI clips
Normal or delay capture
Date, time and text overlay
BMP, TIFF or adjustable JPEG file format
Image viewer with DVR Controls

Video Source

Dual Port Base Camera Link
• 28 Data inputs, each
• 4 LVDS (RS644) outputs – CC1 to CC4, each
• 1 RS232 Serial interface, each
• 1 Clock input – 20MHz to 66 MHz, each

Video Format

- Up to 16 Mega-pixels resolution
- 1x8, 2x8, 1x10, 2x10, 1x12, 2x12, 1x14, 1x16, 3x8(RGB)
- Mono, RGB Color or Bayer Color

Environmental

Operating temperature: 0°C to 65°C
Relative humidity: 90% non-condensing

Mechanical

PCMCIA Type II card
4.5" x 2.1" x 0.2", (115 x 54 x 5) mm
Weight 1.25 oz, (35 g)

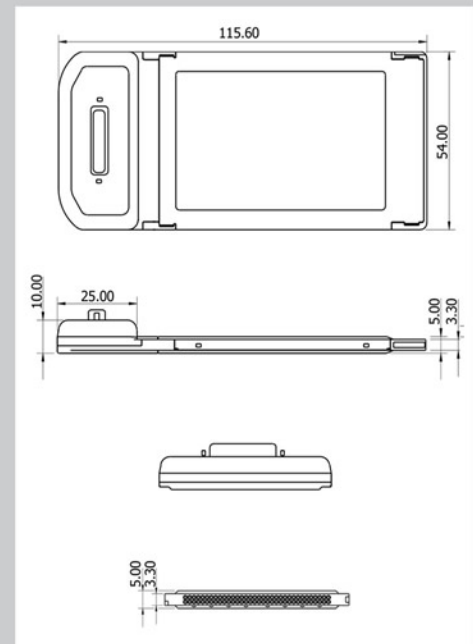
Description

The FrameLink is a professional, state of the art PCMCIA CardBus digital video capture card, allowing users to display, capture, store, and preview mega-pixel video images (up to 16 mega-pixels) on their notebook computers. The FrameLink is capable of capturing single or multiple frames, and standard AVI clips from any Base Camera Link compliant video source. Each captured frame can be stamped with a user message along with the date and time of capture. The FrameLink offers easy to use camera configuration software, which allows for fast implementation of the card into demanding machine vision environments.

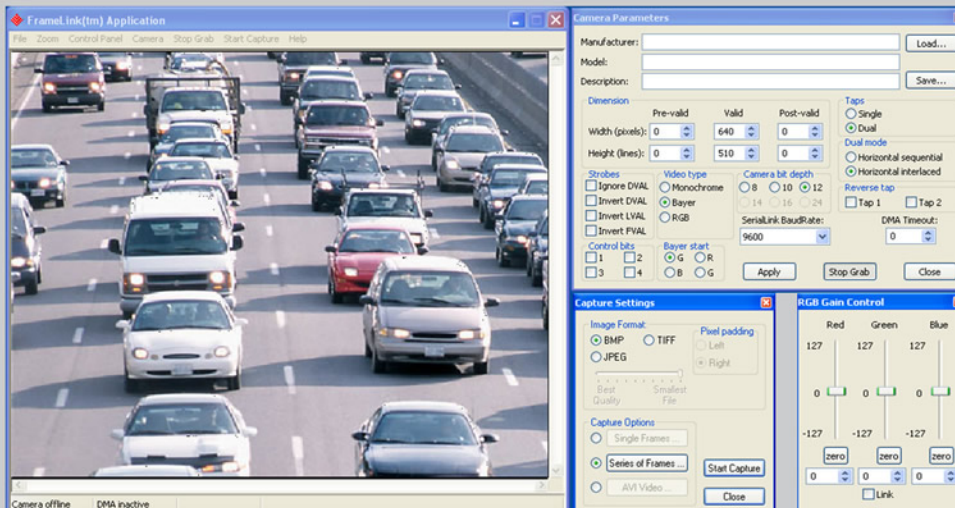
Power Requirements

- 3.3V DC +/- 5%
- 160 mA steady, 360 mA inrush
- 0.5W constant power

Mechanical Dimensions



Software



- Windows 2000 and Windows XP drivers
- WDM, DirectX and LabView drivers
- DLL based SDK (C++, VB examples)
- Image viewer (GUI) application

Ordering Information

Ordering: **FremeLink**

For specific details and ordering information, consult the product user's manual or contact us at sales@imperx.com.

Copyright © 2004, Imperx, Inc. Product information subject to change without notice.

Rev. 1.0, 11/08/04



Imperx Incorporated • 6421 Congress Avenue • Boca Raton, FL 33487 • USA
Phone: 1-561-989-0006 • 1-866-849-1662 • Fax: 1-561-989-0045
www.imperx.com • sales@imperx.com

Made in USA

