



Video Capture Essentials™

Analog PCMCIA Video Capture Card

VCE-B5A01

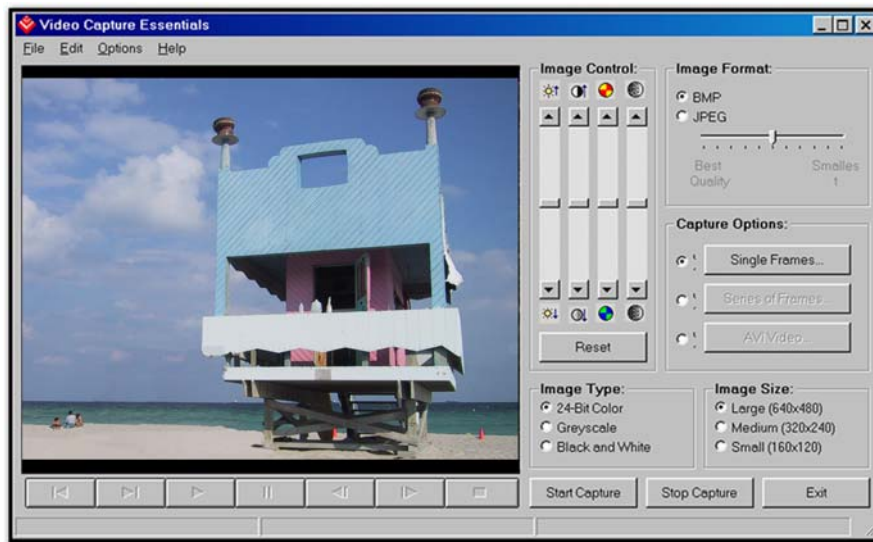
Frame Grabber Specifications

VCE-B5A01 is a low cost, high performance, plug and play 16 bit PCcard video capture card. It allows users to display, capture, store, and preview motion video on their notebook computers. VCE-B5A01 is capable of capturing single frame, multiple frames, and standard AVI clips from a variety of NTSC, PAL or SECAM sources. A built in capture delay function enables users to program their card to record sequences of events at later dates and times. Each captured frame can be stamped with a user message along with the date and time of capture. These unique features allow users to turn their notebooks into a mobile observation system. A specially designed image viewer gives the users flexibility to view, scroll or step through the recorded images. Our Software Development Kit (optional) is a DLL based software development platform supporting C++ and VB. Easy to follow examples provide for fast implementation of custom applications.



Frame Grabber Features
PCMCIA 2.1/JEIDA 4.1 compliant
Plug-and-play
Hot insertion and removal
2 Composite and one S-Video inputs with anti-alias filters
Fast video capture with selectable window sizes: <ul style="list-style-type: none"> • 640 x 480 pixels @ 5fps • 320 x 240 pixels @ 15fps • 160 x 120 pixels @ 30fps
Adjustable image brightness, contrast, saturation and hue
24 bit RGB, 24 bit Grayscale or 8 bit Grayscale display options
Captures single frames, multiple frames and standard AVI clips: <ul style="list-style-type: none"> • Adjustable frame rates • Programmable capture delay up to 60 minutes • Programmable date and time recording • BMP and adjustable compression JPEG file formats • Date and Time stamp options • Text overlay options
Image viewer with play, stop, pause, fast forward, reverse, step up, and step back options.

Video Source Specifications	
Composite or S-Video	
Square pixel and CCIR601 resolution for:	
<ul style="list-style-type: none"> • NTSC • PAL (B, D, G, H, I, M, N) • SECAM 	
Auto NTSC/PAL format detection	
Automatic gain control	
16 bit YCrCb (4:2:2) digital output	
Physical Dimensions	
PCMCIA Type II: 114mm(4.5in) x 54mm(2.1in) x 5mm(.2in)	
Weight: 35 grams (1.25 oz)	
Electrical Characteristics	
Operating voltage: 5V +/- 5%	
Operating current: 200mA	
Inrush current: 750mA	
Operating System	
Windows 95, 98, NT 4.0, ME, 2000, XP	
Operating Environment	
Operating temperature: 0°C to 65°C	
Relative humidity: 90% noncondensing	
Included in Package	
B5A01	B5A01-F
Frame Grabber card	Frame Grabber card
S-Video Cable (SVC-04)	S-Video Cable (9SVC-04)
RCA Video Cable (RCA-04)	RCA to S-Video Cable (9SVC-8)
CD ROM w/ software and drivers	CD ROM w/ software and drivers
Quick start guide and warranty information	Quick start guide and warranty information



Imperx Incorporated • 6421 Congress Avenue, Suite 204, Boca Raton, FL 33487 USA
 Phone: 1-561-989-0006 • Fax: 1-561-989-0045 • www.imperx.com • info@imperx.com